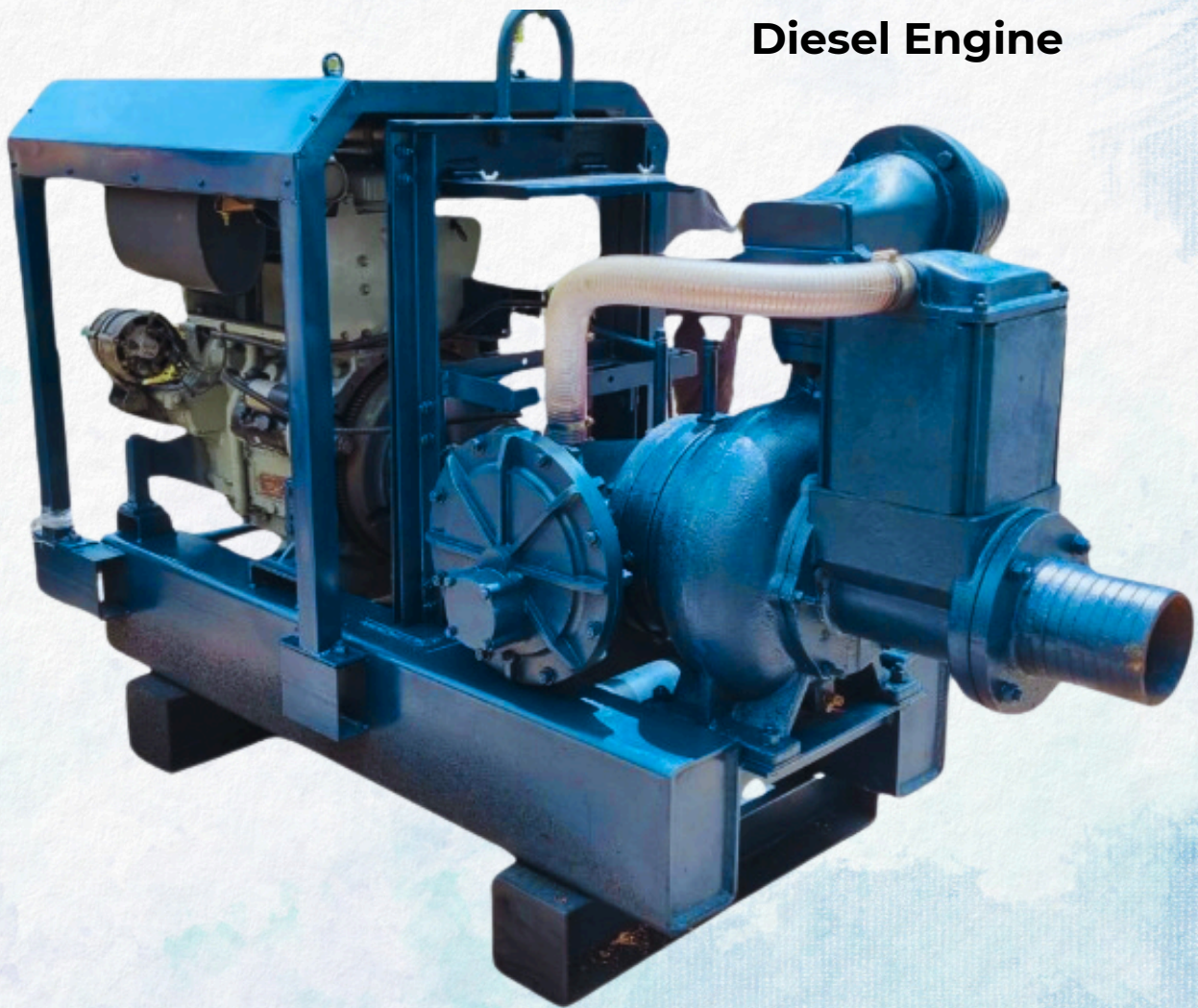


DIESEL ENGINE POWERED

6" x 6" TRASH WATER PUMP

Powered by

**Beinei Deutz F3L912
Diesel Engine**



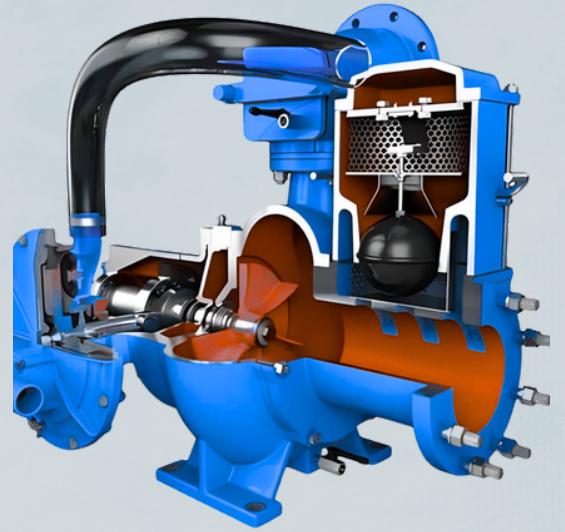
Features & Applications

Features:

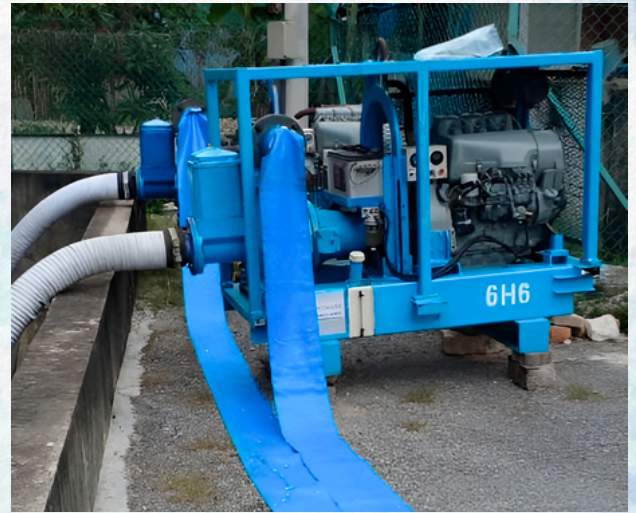
- Automatic dry Priming
- Suitable for Construction Use
Sewage Dewatering
- Easy & Low Maintenance
- Key Start Engine
- Semi Open Impeller allowing the passage of large diameter up to 100mm solids
- Diesel Fuel Tank Capacity At 120 Litre

Applications:

- Wellpoint Dewatering Systems
- Horizontal Drainage
- Construction Site Dewatering



Vacuum Assisted Self-Priming Pump



Specifications

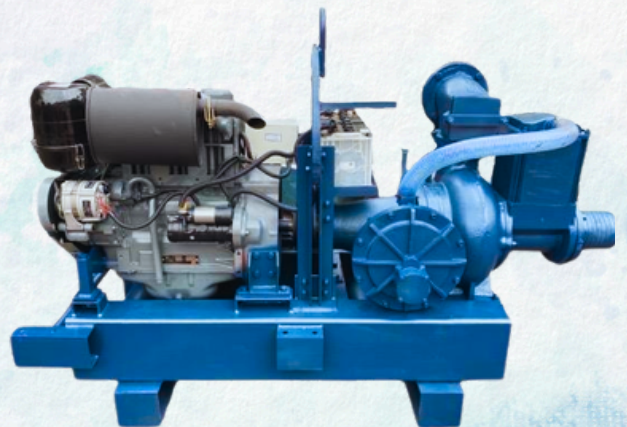
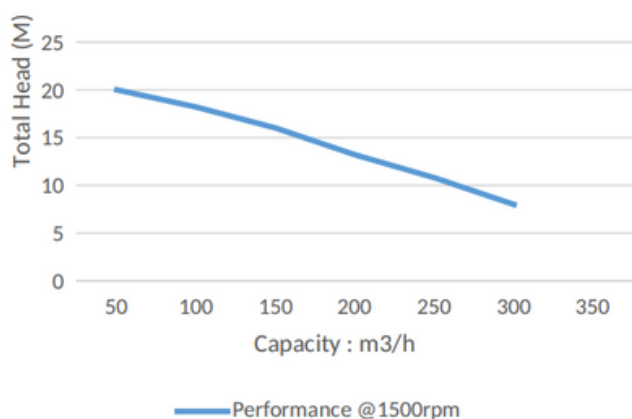
6 inch Self Priming Pump

Capacity (m ³ /h)	320
Total head (m)	21.3
Self Priming Lift (m)	8.8
Pump Speed Maximum (r.p.m)	1600
Pump Speed Minimum (r.p.m)	1000
Inlet Port (mm)	152.4
Outlet Port (mm)	152.4

Beinei Deutz F3L912 Diesel Engine

Number of Cylinders	3
Cooling System	Air Cooled
Displacement (L)	2.828
Max Power	38kW (2500 r.p.m)
Engine Continuous Power	24kW (1500 r.p.m)
Starting System	Key Start

Performance Curve



Gainwealth Engineering & Trading

No. 6, Jalan Sutera 1/5A Kawasan Perindustrian, Bukit Angkat, 43000 Kajang, Selangor, Malaysia
 H/P: 6012-3717349 Tel: 03-8730 1327
 E-mail: alex2gw@gmail.com